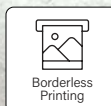
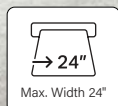


imagePROGRAF  
TM-5240 | TM-5340

**Canon**  
Delighting You Always

# Just Perfect.

Boundless Versatility Made Affordable



The brand new **imagePROGRAF 36" TM-5340** and **24" TM-5240** large format printers provide scalability alongside affordability in small home office printing for photos, CAD drawings and other multi-application prints. Discover greater versatility as well as accessibility in delivering quality prints ideal for your business requirements.

# Versatile and Affordable High-Quality Printing

Designed to provide affordable and quality results for a wide range of printing applications, the new **imagePROGRAF 36" TM-5340** and **24" TM-5240** large format printers help to meet the requirements of engineering firms with versatility in cost and printing.

## Swift Speeds for Greater Productivity

The new **L-COA PRO II high-speed imaging processing chip** provides enhanced data processing power for the TM-5240 and TM-5340, enabling faster turnaround times from sleep mode as well as continuous printing for greater productivity overall.



### Print Speed

Conventional printers



TM-5240/TM-5340

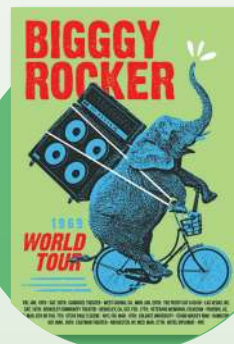


**More than 30% faster\***

*\*Based on Canon internal testing using plain paper with continuous printing of A1 page per min*

## Enhancing Details Through Vivid Red

The **new magenta ink** helps to deliver a vivid red that highlights important details on photos, posters as well as CAD drawings with greater clarity.



## Effortless User Operation



New design comes with **Front Accessory Box**



**Automatic paper type detection** also allows for paper media information and the printer's roll paper balance to be easily retrieved.

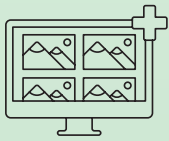


**Ink Tanks Inserts for all colours**



# Streamlining Workflows with Intuitiveness

Experience greater printing convenience with software applications designed to streamline the management of workflows.



## Free Layout Plus

**Free Layout Plus** allows files to be dragged and dropped into the application for the **easy resizing of documents to fit specific paper layouts** before printing.



## Accounting Manager

**Monitor print usage** with greater ease through **Accounting Manager**.



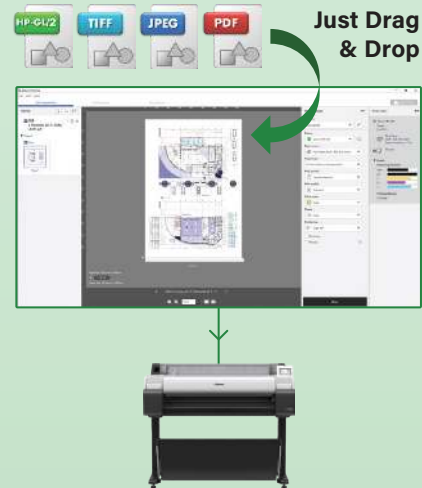
## PosterArtist

The **PosterArtist** application offers effortless creation of **vibrant and visually appealing posters**.

Check it out at <https://posterartist.canon>

## Direct Print Plus

Print **PDF or JPEG files in batches** effortlessly with custom templates by using **Direct Print Plus**.



# Quality with Affordability

Enjoy affordable and high-quality printing with **55ml small capacity ink tanks** best suited for the needs of small businesses or startups.



# Enhanced Scanning Capabilities

The TM-5240 and TM-5340 can be utilised alongside a scanner with enhanced capabilities that improve scanning productivity and operability by offering a **maximum paper thickness of 0.8mm** as well as featuring **new transparent guides**.



TM-5340 Lm36 Scanner



TM-5240 Lm24 Scanner

SPECIFICATIONS

PRINTER		TM-5240	TM-5340
Printer Type		5-Colour, 24"	5-Colour, 36"
Number of Nozzles		15,360 nozzles (MBK 5,120 nozzles, Other Colours 2,560 nozzles each)	
Max. Print Resolution		2,400 x 1,200 dpi	
Nozzle Pitch		1,200 dpi x 2	
Line Accuracy*1		± 0.1 % or less	
Ink Tank Size	Sales Ink	55 ml (MBK, BK, C, M, Y)	
	Bundle Starter Ink	80 ml (MBK). 55 ml (BK, C, M, Y)	
Ink Type		Pigment Ink	
Print Languages		SG Raster (Swift Graphic Raster)	
		HP-GL/2, HP RTL	
		JPEG	
		CALS G4*2	
Print Solutions & Applications		Printer Driver (Win/Mac versions), Direct Print Plus, Free Layout plus, PosterArtist Windows/Web & Lite, Wi-Fi Connection Assistant, PIXMA Cloud Link, Apple AirPrint (Mobile), Canon PRINT Inkjet/SELPHY (Mobile), Canon Print System (Mobile), uniFlow server	
Management Solutions		Media Configuration Tool (Includes Color Customisation Tool), Accounting Manager, Device Management Console, Quick Utility Toolbox	
Interface (Built-In)	USB B Port	Hi-Speed USB, Full Speed (12 Mbit/sec), Hi-Speed (480 Mbit/sec), Bulk Transfer, Series B (4 pins)	
	USB A Port	NA	
	Network	IEEE 802.3 10base-T IEEE 802.3u 100base-TX IEEE 802.3ab 1000base-T IEEE 802.3x Full Duplex SNMP, HTTP, TCP/IP (IPv4/IPv6), FTP	
	Wireless LAN	IEEE802.11 b/g/n WPA-PSK (TKIP/AES) WPA2-PSK (TKIP/AES) WPA3-SAE (AES) WPA-EAP (AES)*3 WPA2-EAP (AES)*3 WPA3-EAP (AES)*3	
Memory		2 GB	
Display		LCD (4.3 inch / 10.9 cm TFT color)	
OS Compatability	Please visit <a href="https://asia.canon">https://asia.canon</a> to confirm OS compatibility and to download the latest drivers.	Windows, Macintosh	
SCANNER			
Scanner Model		Lm24	Lm36
Scan Width		24"	36"
Optical Resolution (DPI)		Up to 600 dpi	
Scan Format		TIFF, TIFF G4, PDF, PDF/A, JPEG Multipage PDF & JPEG	
Scan Destinations		Scan to PC, USB	
Scanner Software		ScanAPP	
Max. Copy Speed: (inch/sec) or (mm/sec)		<b>Colour</b> Draft (300/300 dpi): 1 ips / 25.4 mm per sec Standard (300/600 dpi): 1 ips / 25.4 mm per sec Best (600/600 dpi): 0.5 ips / 12.7 mm per sec	
		<b>Monochrome</b> Draft (300/300 dpi): 3 ips / 76.2 mm per sec Standard (300/600 dpi): 3 ips / 76.2 mm per sec Best (600/600 dpi): 1.5 ips / 38.1 mm per sec	
Max. Scan Speed: (inch/sec) or (mm/sec)		<b>Colour</b> Draft (200 dpi): 1 ips / 25.4 mm per sec Standard (300 dpi): 0.5 ips / 12.7 mm per sec Best (600 dpi): 0.33 ips / 8.38 mm per sec	
		<b>Monochrome</b> Draft (200 dpi): 3 ips / 76.2 mm per sec Standard (300 dpi): 1.5 ips / 38.1 mm per sec Best (600 dpi): 1 ips / 25.4 mm per sec	
Maximum Original Thickness & Length		Up to 0.8 mm	
PRINT SPEED*4		A1 Size	A0 Size
Plain Paper	CAD Drawing (Fast Q5 mode)	23 sec	41 sec
Heavyweight Coated Paper	Poster (Standard mode)	1 min 45 sec	3 min 10 sec

Specifications are subject to change without notice.

\*1 User adjustments required. Printing environment and media must match those used for the adjustments.  
Paper required: Plain paper and coated paper only.

\*2 USB Thumb drive printing is not supported.

\*3 IEEE802.1X (EAP-TLS/EAP-TTLS/PEAP) Supported.

MEDIA HANDLING		TM-5240	TM-5340
Media Width	Roll Paper	203.2 ~ 610 mm	203.2 ~ 917 mm
	Cut Sheet		
Media Thickness	Roll Paper / Cut Sheet	0.07 ~ 0.8 mm	
Printable Media Length	Roll Paper	203.2 mm ~ 18 m*	
Media Core Size	Cut Sheet	279.4 ~ 1,600 mm	
Media Core Size		2 inch (Default) / 3 inch core (Optional)	
Outside Diameter Roll Paper		150 mm or less	
Media Feed	Roll Paper	1 Roll, Top Load, Front Output	
	Cut Sheet	Front Load, Front Output	
Delivery Direction		Face-up, Front side	
Margins (Top, Bottom, Side)	Recommended Area (Roll Paper)	20 mm, 3 mm, 3 mm	
	Recommended Area (Cut Sheet)	20 mm, 20 mm, 3 mm	
	Printable Area (Roll Paper)	3 mm, 3 mm, 3 mm	
	Printable Area (Roll Paperless Print)	0 mm	
	Printable Area (Cut Sheet)	3 mm, 20 mm, 3 mm	
DIMENSIONS (WxDxH) & WEIGHT*			
Packaged Dimensions	TM-5240 Printer (Main unit with pallet)	1,147 x 874 x 542 mm Weight: 50 kg	NA
	TM-5240 Stand + Basket (SD-24)	1,058 x 826 x 270 mm Weight: 20 kg	NA
	TM-5340 Stand + Basket (SD-33)		
	Weight	TM-5240 Printer (Main unit with stand and pallet)	1,152 x 912 x 679 mm Weight: 71 kg
	TM-5340 Printer (Main unit with stand and pallet)		
Printer & Weight	Printer	978 x 748 x 439 mm Weight: 40 kg	1,285 x 748 x 439 mm Weight: 48 kg
	TM-5240 Printer with Stand + Basket (SD-24)	978 x 868 x 1,060 mm (Basket Opened)	1,285 x 868 x 1,060 mm (Basket Opened)
	TM-5340 Printer with Stand + Basket (SD-33)	978 x 756 x 1,060 mm (Basket Closed) Weight: 51 kg	1,285 x 756 x 1,060 mm (Basket Closed) Weight: 60 kg
Scanner & Weight		935 x 253 x 131 mm Weight: 5.28 kg	1,238 x 253 x 131 mm Weight: 6.56 kg
POWER AND OPERATING REQUIREMENTS			
Power Supply (Printer)		AC 100-240 V (50-60 Hz)	
Power Consumption (Printer)	Print Operation	Operation: < 59 W	Operation: < 65 W
	Sleep Mode	< 1.6 W	
	Power OFF	< 0.1 W	
Recommended Environment	Temperature	Temperature: 15-30 °C	
	Humidity	Humidity: 10-80 % RH (no dew condensation)	
Acoustic	Power**	Approx. 6.0 Bels	
	Pressure**	Approx. 39 dB(A), Standby 35 dB(A) or less	
OPTIONAL ACCESSORIES			
Roll Unit		-	
2/3" Roll Holder		RH2-28	RH2-35
Printer Stand + Basket		SD-24	-
Card Reader Interface for uniFLOW		RA-02	
CONSUMABLES			
Ink Tank		Magenta: PFI-8031 (55 ml) Matte Black / Black / Cyan / Yellow: PFI-8030 (55 ml)	
Print Head		PF-06	
Cutter Blade		CT-08	
Maintenance Cartridge		MC-31	

\*4 Time taken to print one page does not include time required for data.

\*5 Varies according to the OS and application.

\*6 Include roll holder set.

\*7 Acoustic Power and Pressure are measured using ISO 7779 standard.



Delighting You Always

SOUTH AND SOUTHEAST ASIA REGIONAL HEADQUARTERS  
CANON SINGAPORE PTE. LTD.

1 Fusionopolis Place, #14-10 Galaxis, Singapore 138522  
Tel : 65-6799-8888 | Fax : 65-6799-8882 | <https://asia.canon>

DEALER'S STAMP

This document is for information purposes only. The contents are subject to change without notice. Product options, name and availability may vary by regions. We expressly disclaim any liability or contractual obligations with respect to this document. Brands and product names are trademarks and/or registered trademarks of their respective owners.